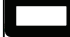








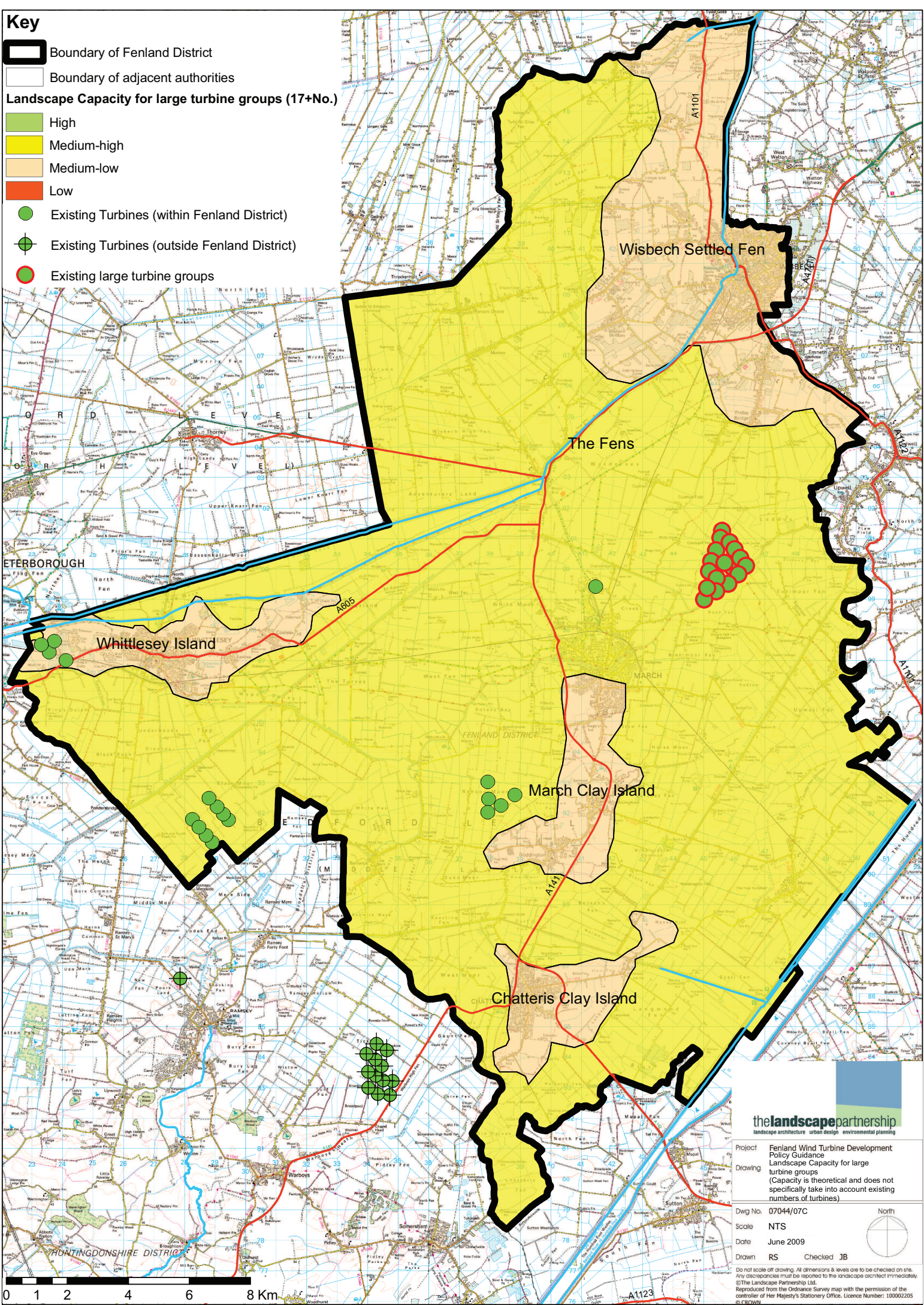


Key

-  Boundary of Fenland District
-  Boundary of adjacent authorities
- Landscape Capacity for large turbine groups (17+No.)**
-  High
-  Medium-high
-  Medium-low
-  Low
-  Existing Turbines (within Fenland District)
-  Existing Turbines (outside Fenland District)
-  Existing large turbine groups



thelandscapepartnership
 landscape architecture urban design environmental planning

Project Fenland Wind Turbine Development
 Policy Guidance
 Drawing Landscape Capacity for large turbine groups
 (Capacity is theoretical and does not specifically take into account existing numbers of turbines)

Dwg No. 07044/07C
 Scale NTS
 Date June 2009
 Drawn RS Checked JB

Do not scale or drawing. All dimensions & levels are to be checked on site. Any discrepancies must be reported to the landscape architect immediately.
 ©The Landscape Partnership Ltd.
 Reproduced from the Ordnance Survey map with the permission of the controller of Her Majesty's Stationery Office. Licence Number: 100002205 in CBW000