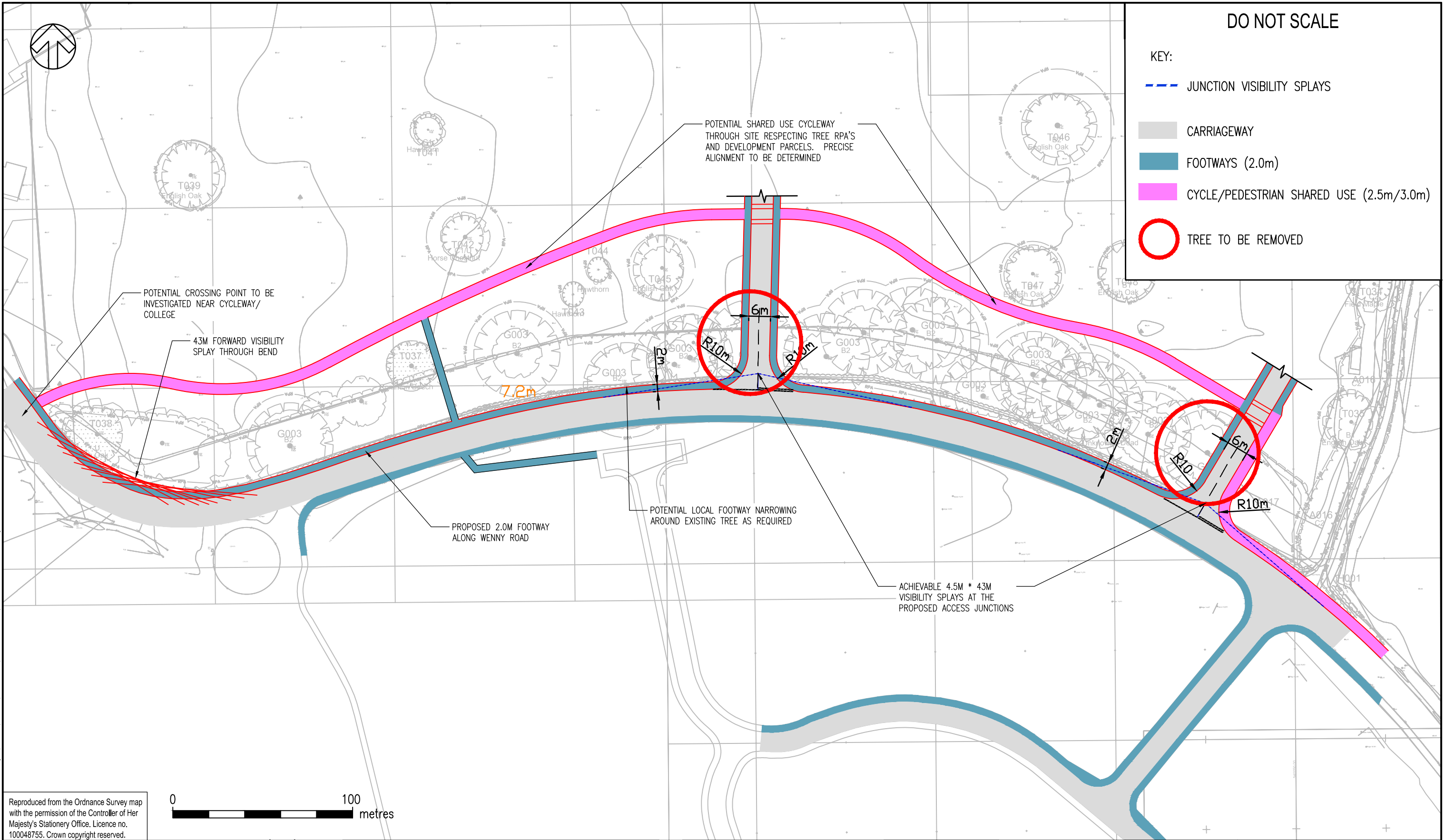


P:\70007651 - Wenny Road, Chatteris\Development\AUTOCAD\SK Sketches\7651-SK-002 C.dwg 21 October 2016 13:06:12 Maude, Lewis



Reproduced from the Ordnance Survey map with the permission of the Controller of Her Majesty's Stationery Office. Licence no. 100048755. Crown copyright reserved.

REV	DATE	BY	DESCRIPTION	CHK	APD
C	10/10/16	JFD	REVISED WITH NMUS FACILITIES	NJE	NJE
B	13/01/16	GW	AMENDED ACCESS LOCATION	NJE	NJE
A	11/01/16	GW	ISSUED FOR	NJE	NJE

DRAWING STATUS: FOR INFORMATION ONLY

66-68 Hills Road, Cambridge CB2 1LA
 Tel: +44 (0)1223 558 050 Fax: +44 (0)1223 558 051
 www.wspgroup.com www.pbworld.com

CLIENT: CANNON KIRK (UK) LTD

ARCHITECT: SAVILLS

PROJECT: WENNY ROAD, CHATTERIS

TITLE: COMBINED SURVEY MAPPING

SCALE @ A3: 1:1,000	CHECKED: NJE	APPROVED: NJE
CAD FILE: 7651-SK-002 C.DWG	DESIGN-DRAWN: GW	DATE: June 16
PROJECT No: 70007651	DRAWING No: 7651-SK-002 C	REV: C
© WSP Group Ltd		