



4th August 2020

## An important message from Dr Liz Robin, Director of Public Health for Cambridgeshire

As Director of Public Health for Cambridgeshire, I am writing to you at this extraordinary time to ask you to make sure you've put the right controls in place to protect your workforce from COVID-19.

To date there has been a lower rate of spread of COVID-19 infection across most of Cambridgeshire than in some other areas. This is really good news.

However, we cannot be complacent. The challenge to prevent the spread of the virus is now more important than ever. We know workplaces can be the source of outbreaks and we cannot afford to throw away the gains we have made locally.

**So, I am urging you to follow all relevant government guidance to ensure that your workplace is as safe as it can be and is fully prepared to respond appropriately to any case of COVID-19 within the workforce.**

In particular I would ask you to be responsible when dealing with employees who might be unwell. It is essential they are able to self-isolate and contact the national Test and Trace programme. I know this may present operational issues for some businesses, but it is very important everyone complies.

You can find lots of helpful information, including how to contact the  
**Test and Trace service** and potential avenues for support at  
[www.gov.uk/coronavirus](http://www.gov.uk/coronavirus) or at [www.cambridgeshire.gov.uk/coronavirus](http://www.cambridgeshire.gov.uk/coronavirus)

I would, at all costs, like to avoid a situation where a Cambridgeshire business is forced to close due to a significant outbreak, or an area of the county has local lockdown arrangements re-imposed as we have seen happen elsewhere.

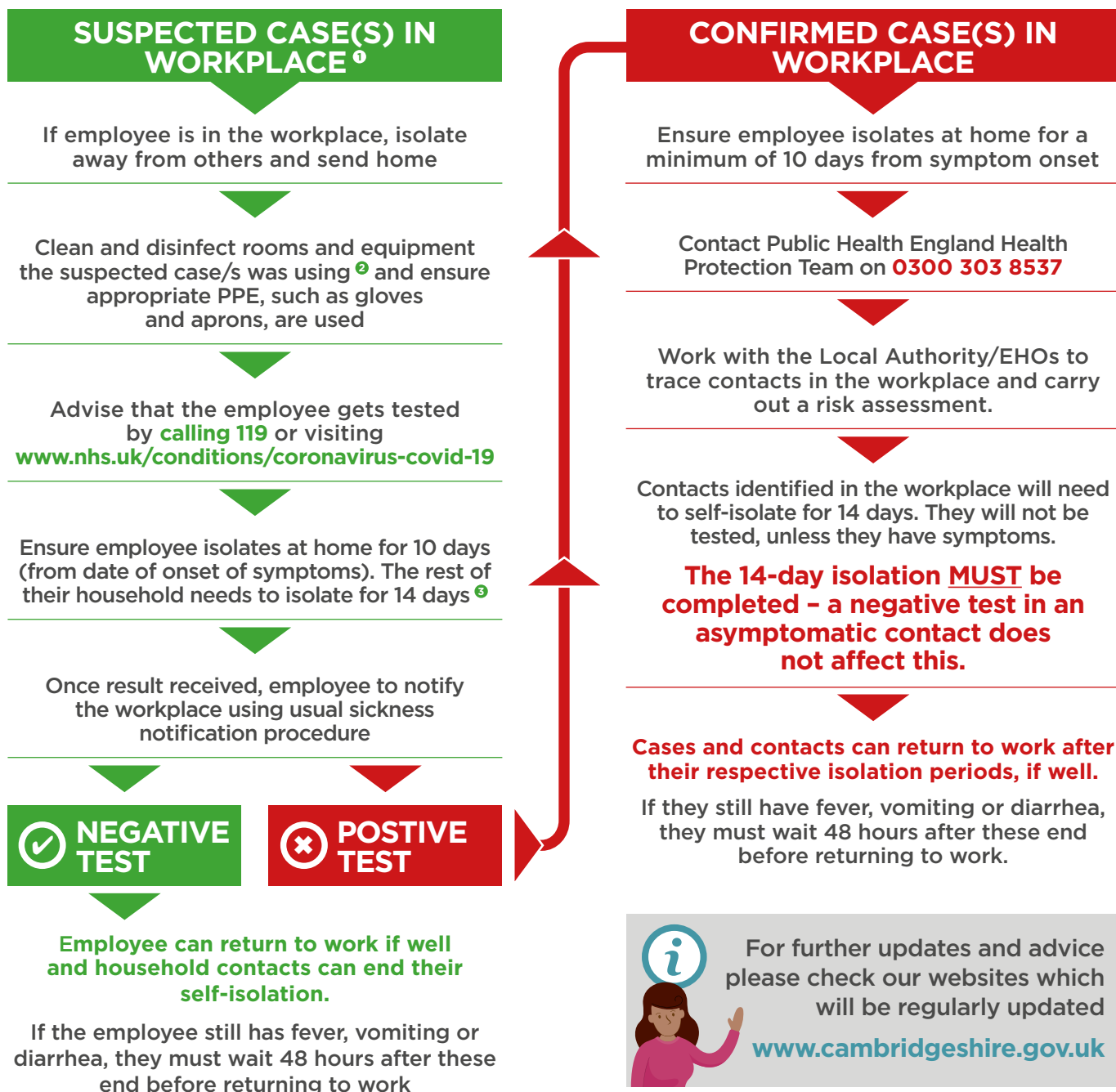
Thank you



## Guidance for Management of COVID-19 in Workplaces (July 2020)

If you have any general questions or concerns, please contact your Local Authority, Public Health England Health Protection Team [eeo.crc@phe.gov.uk](mailto:eeo.crc@phe.gov.uk) or the Health and Safety Executive.

Guidance changes rapidly and the latest guidance should always be consulted at: [www.gov.uk/coronavirus](http://www.gov.uk/coronavirus)



More information about COVID-19 early outbreak management  
[www.gov.uk/government/publications/reporting-outbreaks-of-coronavirus-covid-19/covid-19-early-outbreak-management](http://www.gov.uk/government/publications/reporting-outbreaks-of-coronavirus-covid-19/covid-19-early-outbreak-management)

- <sup>1</sup> Suspected case: anyone with a new continuous cough and/or high temperature and/or a loss of, or change in, normal sense of taste or smell (anosmia)
- <sup>2</sup> [www.gov.uk/government/publications/covid-19-decontamination-in-non-healthcare-settings/covid-19-decontamination-in-non-healthcare-settings](http://www.gov.uk/government/publications/covid-19-decontamination-in-non-healthcare-settings/covid-19-decontamination-in-non-healthcare-settings)
- <sup>3</sup> [www.gov.uk/government/publications/covid-19-stay-at-home-guidance/stay-at-home-guidance-for-households-with-possible-coronavirus-covid-19-infection](http://www.gov.uk/government/publications/covid-19-stay-at-home-guidance/stay-at-home-guidance-for-households-with-possible-coronavirus-covid-19-infection)