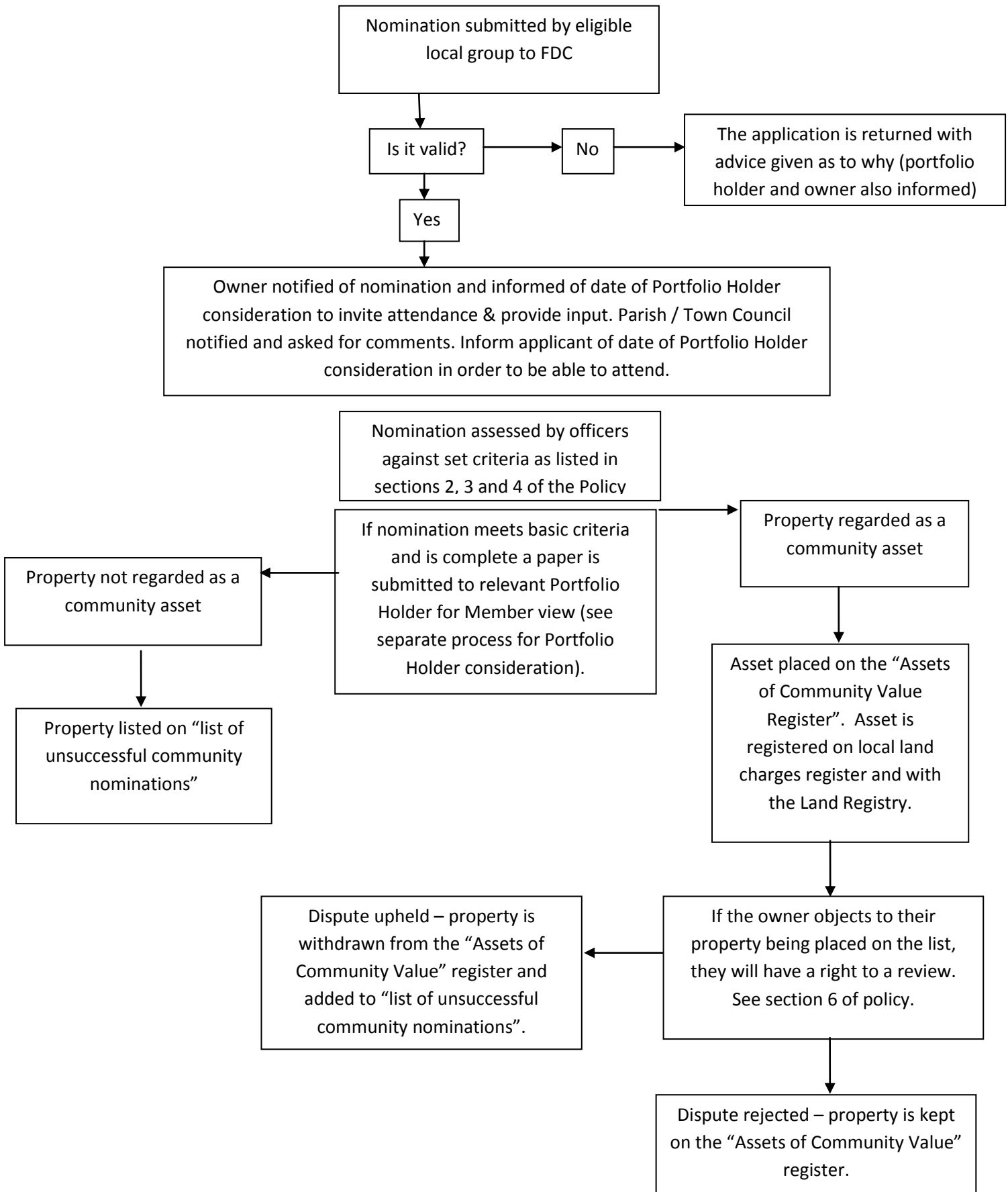
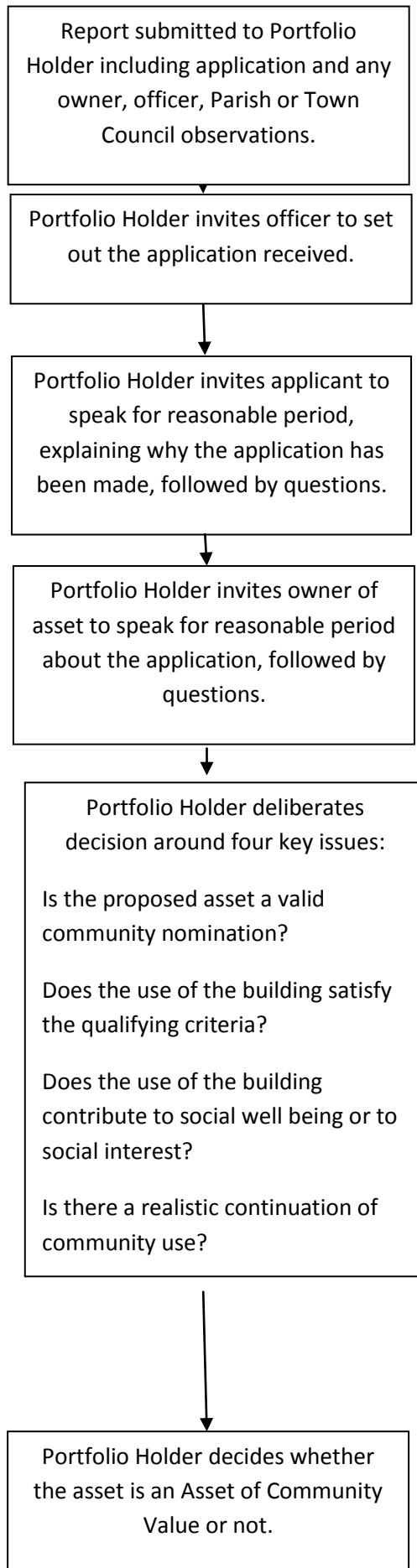


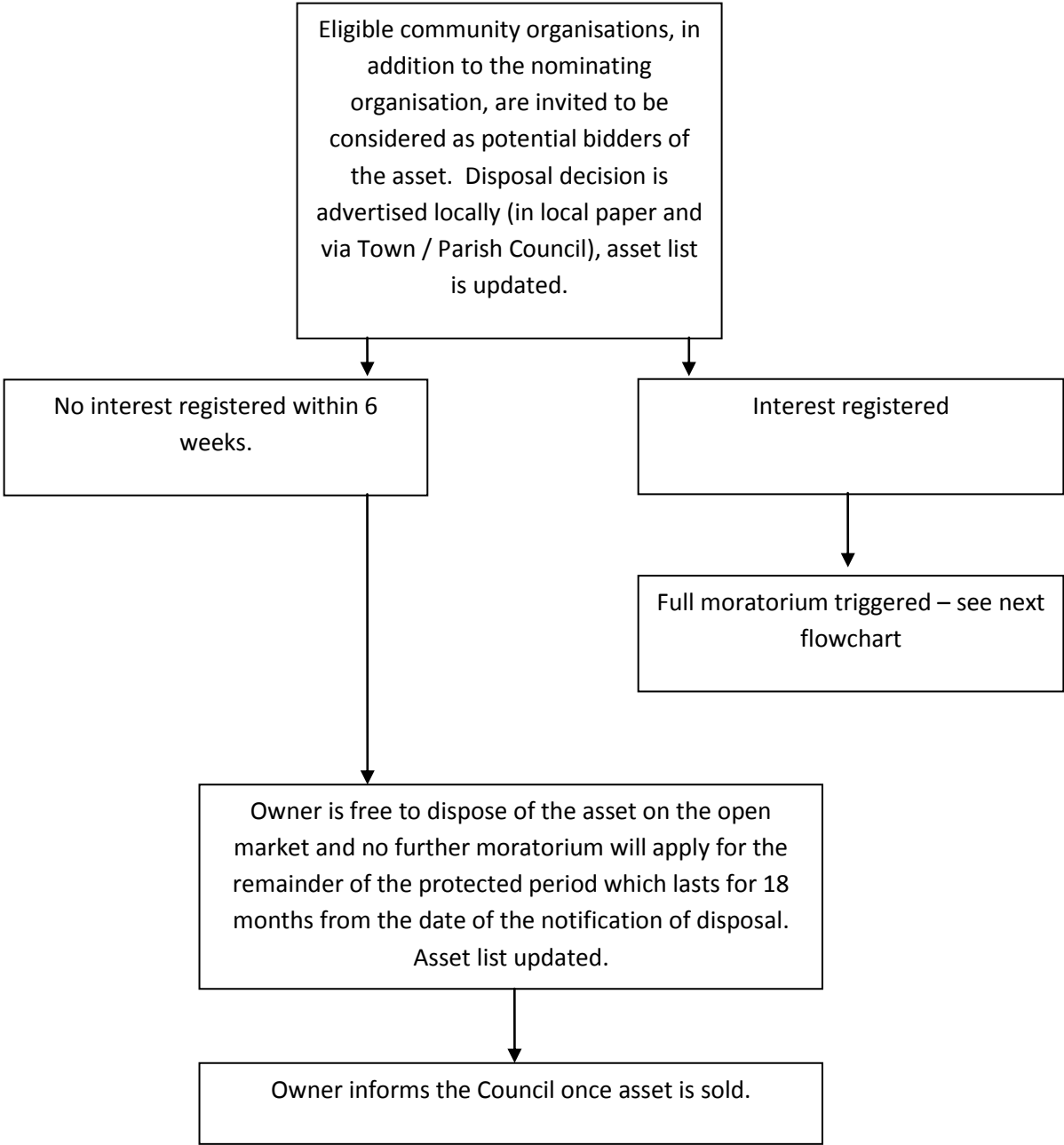
### Asset of Community Value – Initial assessment period – 8 weeks



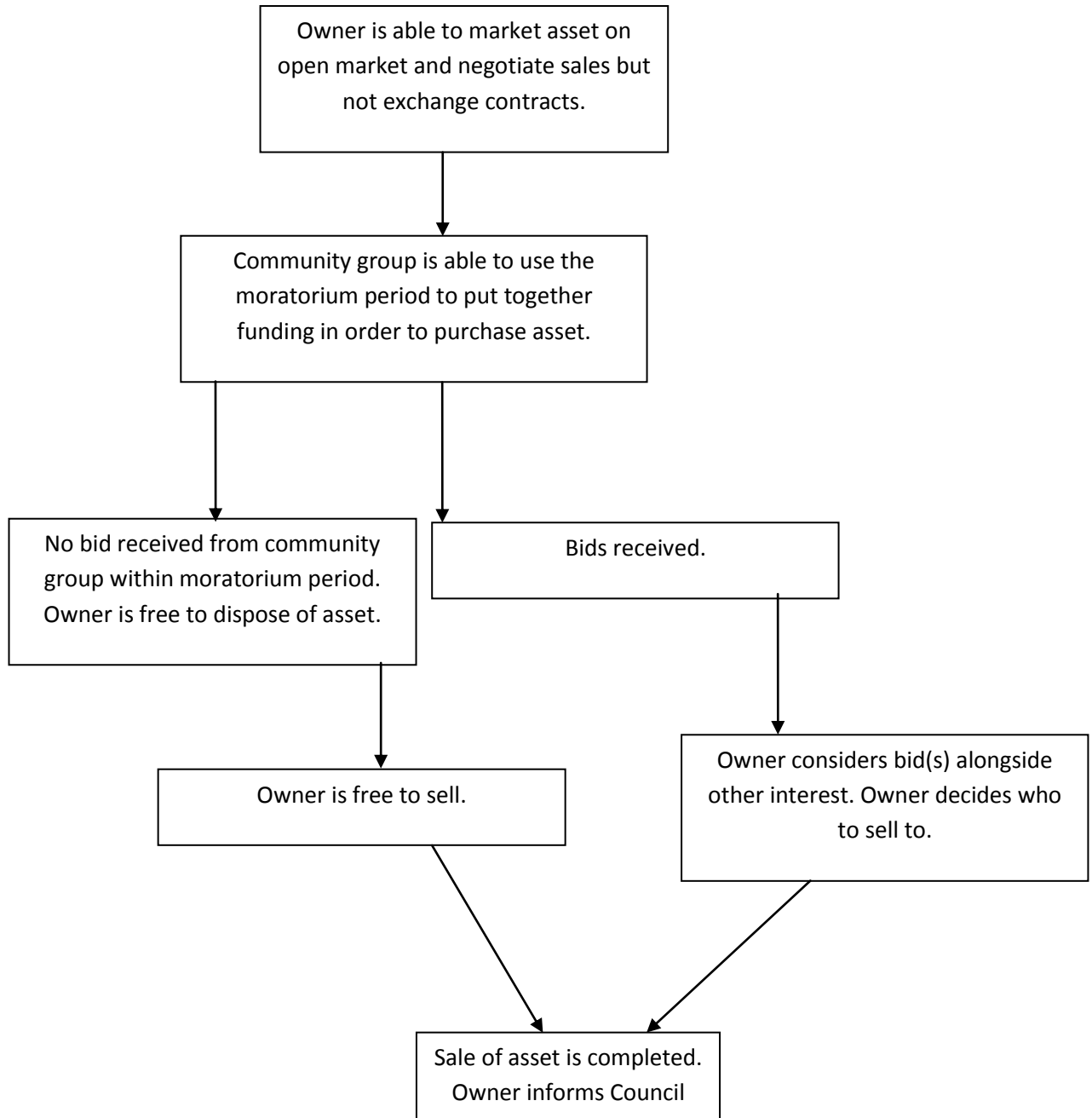
### Asset of Community Value – Portfolio Holder considerations



**Asset of Community Value – owner decides to dispose of asset – interim moratorium triggered – 6 weeks**



**Asset of Community Value – full moratorium period triggered, backdated to the notification of intention to sell date – 6 months**



**Asset of Community Value – Review procedure by Cabinet**

